

INSTALLATION & OPERATIONS
MANUAL FOR Z0-910/912™

**OZONE SYSTEM FOR
IN-GROUND POOLS
New and Existing**

MANUFACTURED BY

***DEL* INDUSTRIES**

3428 Bullock Lane
San Luis Obispo, CA 93401
800-676-1335

IMPORTANT SAFETY INSTRUCTIONS

When installing and using DELZONE Model ZO-910/912™, basic safety precautions should always be followed:

Be sure all the electrical power is shut OFF at the main circuit breaker before installing the ZO-910/912.

1. **READ AND FOLLOW ALL INSTRUCTIONS.**
2. All permanent electrical connections should be made by a qualified electrician.
3. For cord- and plug-connected units, connect to a grounded, grounding type receptacle only. If the ZO-910/912 electrical connection is to be attached to the pool controls, be sure the pool controls are protected by a Ground Fault Circuit Interrupter (G.F.C.I.). If the ZO-910/912 is connected to an independent electrical supply, then a G.F.C.I. must be installed between the ZO-910/912 and the electrical supply.
4. Do not bury cord.
5. **WARNING:** To reduce the risk of electric shock, replace damaged cord immediately.
6. A pressure wire connector is provided on the outside of the unit to permit connection to a minimum No. 8 AWG (8.4 mm²) solid bonding conductor between this point and any metal equipment, metal enclosures of electrical equipment, metal water pipe, or conduit within five (5) feet (1.5m) of the unit as needed to comply with local requirements. Install at least 5 feet (1.5m) from the inside wall of the pool using non-metallic tubing.
7. The ZO-910/912 must be installed in an outdoor location, or indoors in a forced air ventilated room. Install so that the orientation is as shown in Figure 1. This will provide water drainage of the generator to protect electrical components.
8. The ZO-910/912 lamp emits ultraviolet light which is harmful to your eyes and skin if exposed. Always have the electrical power OFF when removing the endcap from the ZO-910/912 and exposing the lamp.
9. Mount the ZO-910/912 so that it is inaccessible to anyone in the pool. Never attempt any servicing while unit is wet.
10. Follow all applicable electrical codes.
11. Plastic ozone supply tubing is supplied with the ZO-910/912. Never replace this tubing with metal tubing.
12. **SAVE THESE INSTRUCTIONS.**

TABLE OF CONTENTS

SAFETY INSTRUCTIONS	1
TABLE OF CONTENTS	2
PRELIMINARIES	3
<i>Description of DELZONE ZO-910/912</i>	3
<i>Tools and Materials</i>	4
GENERAL INSTALLATION	4
<i>Mounting</i>	4
<i>Electrical Connection</i>	5
<i>Plumbing the Injector Manifold</i>	5
<i>Flowmeter Test</i>	6
<i>Ozone Supply Tubing Connection</i>	7
MAINTENANCE	7
<i>The ZO-910/912 Lamp</i>	8
<i>Changing the ZO-910/912 Lamp</i>	8
<i>Cabinet Cleaning</i>	8
TROUBLE SHOOTING	8
BASIC WATER CHEMISTRY CHART	10
WARRANTY	12

PRELIMINARIES

DESCRIPTION of DELZONE ZO-910/912™

The ZO-910/912 is a vacuum-injected ozone generator which produces ozone using one high output ultraviolet lamp. The generator enclosure is a weatherproof, powder coated, aluminum housing. The ZO-910 is designed for in-ground pools up to 25,000 Gallons. The ZO-912 is designed for in-ground pools up to 50,000 Gallons. **Read these instructions completely before you begin the installation.**

Unpack the DELZONE unit and become familiar with it (Figure 1).

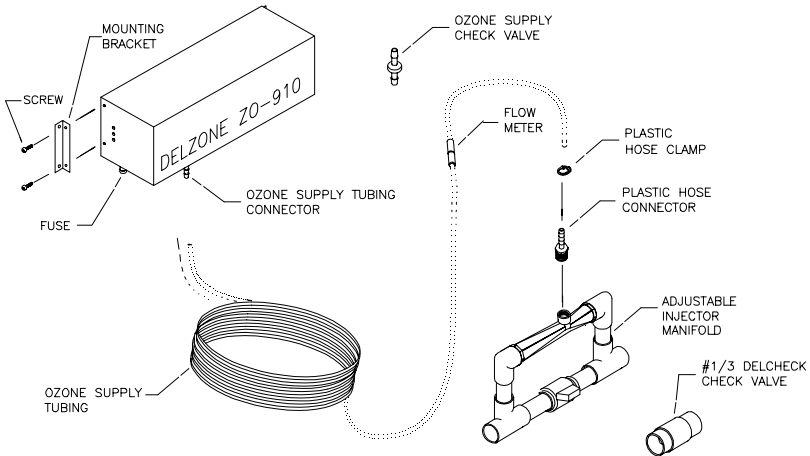


Figure 1: Ozone Generator and Parts

Notice the location of the air inlet-drain holes on the bottom of the unit, holes for the mounting brackets attachment (2 holes on each end of the back side of the generator), the ozone supply tubing connector, and the electrical cord. Locate the ozone supply tubing, one plastic ozone supply check valve, four plastic hose clamps, one plastic hose connector, the flowmeter (attached to the ozone supply tubing toward one end), and a 2" PVC DELCheck™ 1/3# check valve.

TOOLS AND MATERIALS REQUIRED FOR INSTALLATION

Screwdriver
Scissors
Adjustable Wrench
Pliers

PVC Pipe Cutters/Saw
Teflon Tape
PVC Glue
Mounting Screws

GENERAL INSTALLATION

MOUNTING

Attach mounting brackets to the ZO-910/912 with provided screws as shown on Figure 1. Find a suitable location to mount the ZO-910/912. It cannot be accessible to anyone inside the pool and must be mounted in an upright position as shown in Figure 2.

The ZO-910/912 should be mounted **above** the water line if possible. If this is not possible, the ozone supply tubing **must** be routed above the water line with a Hartford Loop (water trap; Figure 2) between the generator and the pool. In either case, the ozone supply check valve provided must be installed in the ozone supply tubing between the generator and the injector. See Figure 4 for further installation information on the ozone supply check valve.

Because the ZO-910/912 generates heat during operation, it is a good idea to mount the unit in a shaded area. If the mounting area is subject to blowing dust or dirt, shelter should be provided for the ZO-910/912.

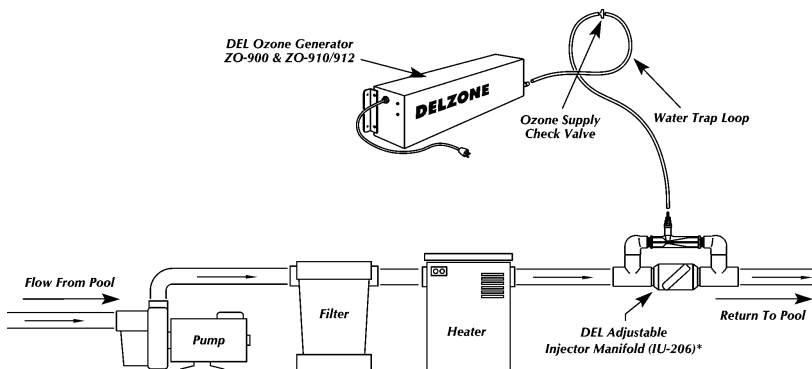


Figure 2: Installation Diagram

ELECTRICAL CONNECTION

The ZO-910/912 is manufactured for **110 VAC** only unless specifically ordered for 220 VAC. The electrical connection should be made by a licensed electrician and all applicable codes should be followed.

NOTE: The ZO-910/912 must operate *only while the pool pump is on*. The ZO-910/912 must be connected to a Ground Fault Circuit Interrupter (G.F.C.I.) protected power source. The ZO-910/912 should be wired directly to the pool pump timer allowing simultaneous operation with the pool pump. If the pool pump operates continuously (24 hours), the 110 VAC model ZO-910/912 can be plugged directly into a G.F.C.I. protected outlet.

If you experience difficulty with your installation, ask your local DEL product dealer for the name and location of our nearest service technician center.

PLUMBING THE INJECTOR MANIFOLD

The **2" DEL Adjustable Injector Manifold** must be installed in the pool's main return line after all other pool equipment (pump, filter and heater). It should be installed as close to the equipment and as far from the pool as possible.

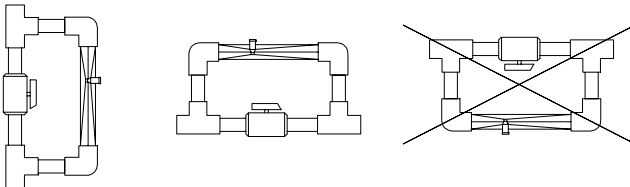


Figure 3: Injector Mounting Diagram

Turn the handle on the injector manifold counter-clockwise all the way until the ball valve is wide open. Locate an appropriate section of the return line, hold the injector manifold against the pipe and mark the length. Subtract 2- 2/3" from the overall length. Mark this point, and cut out the section (about 12- 1/3"). Install the injector manifold with PVC cement. Be very careful to observe and follow the correct water flow direction (Figure 2). The injector manifold can be installed in either a vertical or horizontal position in the return line, but should **not** be installed with outlet facing down (Figure 3).

NOTE: If the pool equipment is located above the water level of the pool, you must install the clear PVC DELCheck™ 1/3# check valve as shown in Figure 2.

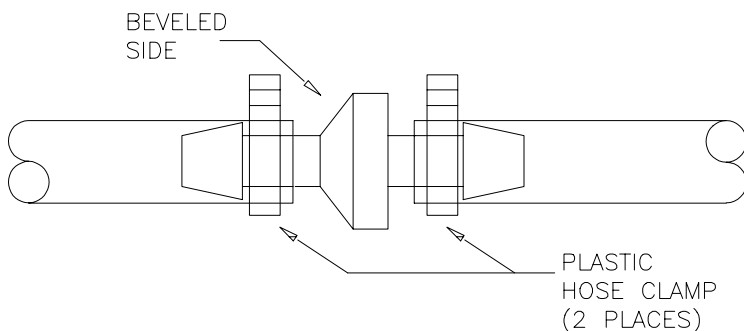


Figure 4: Check Valve

Locate the plastic hose connector, wrap 3 layers of teflon tape on the threads (do not use thread sealant), and install it hand tight into 1/2" female pipe thread fitting of the **DEL Adjustable Injector Manifold**. Tighten the plastic hose connector 1/2 turn with a wrench. Locate the flowmeter installed toward one end of the ozone supply tubing and secure this end of the tubing to the barb end of the plastic hose connector with a supplied plastic hose clamp as shown in Figure 1. Locate the ozone supply check valve and install it into ozone supply tubing by cutting tubing and securing it on the both ends of the check valve with plastic hose clamps as shown in Figure 4.

NOTE: Be sure the beveled side of the ozone supply check valve is pointing toward the direction of the injector (Figure 4).

FLOWMETER TEST

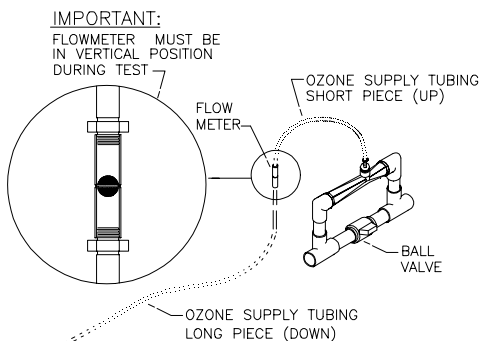


Figure 5: Flow Meter Test

Turn on the pool pump and slowly turn the ball valve in a clockwise direction (toward closed) until the middle of the ball in the flowmeter floats just at the indicator line. Hold the flowmeter vertically with top side up (the top side of the flowmeter is attached to the short piece of ozone supply tubing). If the ball bounces up and down, use the average of the movement as the set point. The Adjustable Injector Manifold is now correctly calibrated. Remove flowmeter assembly and connect directly to injector. Reconnect flowmeter periodically to make sure that adjustable injector is properly adjusted.

OZONE SUPPLY TUBING CONNECTION

If the generator is mounted above the water line attach the other end of ozone supply tubing to the ozone supply tubing connector on the ZO-910/912 and secure it with the supplied plastic hose clamp.

NOTE: If the generator is mounted below the water line, the ozone supply tubing *must* be run from the generator to a point above the water line. A Hartford Loop *must* be used at this point.

To make a Hartford Loop, simply coil the tubing into a complete circle about 6" diameter (Figure 2), and fasten it above the water line. The Hartford Loop will act as a water trap to prevent water from running back to the generator in case the check valve fails. The supplied plastic check valve should be installed in the ozone supply tubing near the loop, between the generator and the loop, and secured with plastic hose clamps (Figure 2). *Be sure that the beveled side of the check valve points in the direction of the injector.* Your installation is now complete. The DELZONE ZO-910/912 will automatically inject ozone into the pool water to keep it clean and sanitized.

MAINTENANCE

CAUTION: Never operate the ZO-910/912 with cover removed and the lamp exposed, as exposure to the Ozone lamp while it is operating can cause severe eye and skin damage! The ZO-910/912 is very reliable and requires very little maintenance. As long as the lamp service (red indicator) light on the ZO-910/912 is *not* on, and there is sufficient air flow through the generator, you can be assured the system is working.

THE ZO-910/912 LAMP

The ZO-910/912 lamp has a life expectancy of approximately two years. (Fluctuations in local line voltage may reduce lamp life). When the red indicator light stays on, it is time to change the lamp.

CHANGING THE ZO-910/912 LAMP

Turn off the electrical power, remove the five screws holding cover of the ozone generator. Carefully remove cover and set it aside. Disconnect electrical connector attached to the pins of the UV lamp. Slide the UV lamp back into the lamp chamber, pull lamp out from the spring-clip and remove it from the ozone generator. Replace existing grommet on side of lamp chamber with the new one. Install new UV lamp, attach electrical connector. Replace cover.

NOTE: Never touch the glass portion of the DELZONE lamp with your bare hands. If this is unavoidable, be sure to wipe the lamp with a soft cloth. Fingerprints may result in lamp damage!

CABINET CLEANING

Clean the cabinet at the beginning of each pool season, or as needed. To do so, turn off the circuit breaker and remove cover. Using compressed air or a vacuum cleaner, clean the interior of the unit of any accumulated dust or debris. Wipe down the outside of the cabinet with a damp cloth. Replace the cover and reconnect to the electrical supply.

TROUBLE-SHOOTING

There are four areas to check to determine the location of any problem:

1. The red lamp indicator light on the left of the unit, which should remain OFF while the unit is operating;
2. The green power indicator light on the left of the unit should remain on during operation;
3. The condition of the water;
4. Ozone bubbles in the water.

SYMPTOM: Green indicator light OFF

PROBABLE CAUSE

1. No power to unit
2. Main circuit breaker tripped
3. G.F.C.I. tripped
4. Defective electrical system

CORRECTIVE ACTION

- 1A. Check power source and cord
- 2A. Reset circuit breaker
- 3A. Reset G.F.C.I.
- 4A. Return to dealer for service/repair

SYMPTOM: Red and green indicator lights ON

PROBABLE CAUSE

- 5. Lamp connection(s) loose
- 6. Lamp burnt out
- 7. Defective Ballast

CORRECTIVE ACTION

- 5A. Check and reconnect if loose.
- 6A. Replace lamp
- 7A. Disconnect wires from the ballast and check the resistance across the ballast as indicated below:
 - white - white - 0
 - black - blue - 9 ohms
 - white - blue - infinityIf the ballast checks good, then the lamp has failed.

SYMPTOM: Red indicator light OFF, but no ozone bubbles

PROBABLE CAUSE

- 8. Leak in system
- 9. Tubing is kinked or crimped
- 10. Defective electrical system

CORRECTIVE ACTION

- 8A. Check all tubing connections.
- 9A. Check all tubing and unkink.
- 10A. Return to dealer for service/repair

SYMPTOM: Everything works correctly, but water is dirty

PROBABLE CAUSE

- 11. Excessive bather load
- 12. pH not balanced
- 13. Total alkalinity incorrect
- 14. Dirty, loose, or cracked filter

CORRECTIVE ACTION

- 11A. If an extra-high bather load is unusual, water will usually clear within 24 hours; if the extra-high bather load is not unusual, continue 24 hours operation and begin a test program of increasing by a small amount the chlorine or bromine or use a non-chlorine shock treatment.
- 12A. Adjust pH to between 7.2 and 7.8.
- 13A. Adjust total alkalinity to between 80 and 150 PPM.
- 14A. Service filter.

DELQUIK BASIC WATER CHEMISTRY CHART

PROBLEM	DESCRIPTION	CAUSE	REMEDY
Green Algae	<ol style="list-style-type: none"> 1. Green water 2. Green spots on surface 3. Slippery surface 	<ol style="list-style-type: none"> 1. Low ozone, bromine or chlorine levels 2. Low algaecide levels 	<ol style="list-style-type: none"> 1. Superchlorinate 2. Brush spa (removing algae) 3. Vacuum spa (removing algae) 4. Increase oxidizer residual 5. Increase algaecide level
Black Algae	<ol style="list-style-type: none"> 1. Black spots on spa surface 	<ol style="list-style-type: none"> 1. Low oxidizer levels 2. Low algaecide levels 	<ol style="list-style-type: none"> 1. Superchlorinate 2. Brush spa (removing algae) 3. Increase ozone, chlorine or bromine residual 4. Increase algaecide level
Unpleasant Odor Burning Eyes	<ol style="list-style-type: none"> 1. Chlorine-like odor 2. Burning sensation in eyes 	<ol style="list-style-type: none"> 1. Combined chlorine; 2. pH out of balance 	<ol style="list-style-type: none"> 1. Balance pH to 7.2-7.6 2. Superchlorinate
Colored Water	<ol style="list-style-type: none"> 1. Water in newly filled spa turns black, blue or brown when first treated with ozone 	<ol style="list-style-type: none"> 1. Copper, iron, or manganese in water being oxidized by chlorine or ozone 	<ol style="list-style-type: none"> 1. Adjust pH to 7.2-7.6 2. Run filter continuously and backwash as required 3. Vacuum settled material 4. Use sequestering agent for prevention
Hard Water	<ol style="list-style-type: none"> 1. Cloudy water 2. Scaling 	<ol style="list-style-type: none"> 1. Excessive hardness of makeup water or building up of dissolved minerals in the water caused by continued use of spa chemicals 	<ol style="list-style-type: none"> 1. Clean filter 2. Filter continuously 3. Adjust pH to 7.2-7.6 4. Use scale inhibitor 5. Dilute with makeup water

**STANDARD POOL MAINTENANCE
GUIDELINES:
*When Used With Ozone***

Measurement	Recommended Level
Total Alkalinity	80-120 ppm
Calcium Hardness	200-300 ppm
Chlorine	.5-1 ppm
Bromine	1-2 ppm
Total Dissolved Solids	Less than 1500 ppm

DEL Industries • ONE YEAR LIMITED WARRANTY

The limited warranty set forth below applies to products manufactured by DEL INDUSTRIES, 3428 Bullock Lane, San Luis Obispo, California 93401, and sold by DEL INDUSTRIES and its authorized dealers. This limited warranty is given only to the first retail purchaser of such products and is not transferable to any subsequent owners or purchasers of such products. DEL INDUSTRIES warrants that it or its authorized dealers will repair or replace, at its option, any part of such products proven to be defective in materials or workmanship within one (1) year of the date of retail purchase of such products ANY REPAIR OR REPLACEMENT WILL BE WARRANTED ONLY FOR THE BALANCE OF THE ORIGINAL WARRANTY PERIOD. NOTE: USE ONLY DEL AUTHORIZED REPLACEMENT PARTS. USE OF ANY OTHER PART(S) WILL AUTOMATICALLY VOID THIS WARRANTY. THIS LIMITED WARRANTY DOES NOT INCLUDE ANY OF THE FOLLOWING: (a) any labor charges for trouble-shooting, removal, or installation of such parts; (b) any repair or replacement of such parts necessitated by faulty installation, improper maintenance, improper operation, misuse, abuse, negligence, accident, fire, repair materials, and/or unauthorized accessories; (c) any such products installed without regard to required local codes and accepted trade practices; (d) ANY IMPLIED WARRANTY OF MERCHANTABILITY OR IMPLIED WARRANTY OF FITNESS FOR PARTICULAR PURPOSE, AND SUCH WARRANTIES ARE HEREBY DISCLAIMED; AND (e) DEL INDUSTRIES SHALL NOT BE LIABLE UNDER ANY CIRCUMSTANCES FOR LOSS OF USE OF SUCH PRODUCTS, LOST PROFITS, DIRECT DAMAGES, INDIRECT DAMAGES, CONSEQUENTIAL DAMAGES AND/OR INCIDENTAL DAMAGES. This warranty gives you specific legal rights. You may also have other rights which vary from state to state.

TO OBTAIN WARRANTY SERVICE:

Contact DEL INDUSTRIES, 3428 Bullock Lane, San Luis Obispo, CA 93401 Customer Service Number: (805) 541-1601. When filing a claim, you must provide: 1) your name, mailing address and telephone number; 2) the selling dealer's name; 3) proof of date of purchase; 4) the date of failure; and 5) a description of the failure.

After this information is provided, DEL INDUSTRIES will issue a RETURN GOODS AUTHORIZATION (RGA) NUMBER. After receiving this number, the part in question must be returned to DEL INDUSTRIES, freight prepaid, with the ***RGA number clearly marked on the outside of the package***. All pre-authorized defective parts must be returned to DEL INDUSTRIES within thirty (30) days. ***Under no circumstances may any product be returned to DEL INDUSTRIES without prior authorization.*** You must call or write first or your returned goods shipment will be refused. Upon receipt of pre-authorized returned goods, DEL INDUSTRIES will repair or replace, at DEL's option, the defective product(s) and return them freight collect. To validate your warranty, fill in the enclosed warranty registration card and return it to DEL INDUSTRIES within ten (10) days of your purchase. Buyer's acceptance of the product and use thereof constitutes acceptance of these terms.

