

## 9" Square "Wave" Anti-Entrapment Suction Outlet Cover, Vented Riser Ring and Mud Frame

### VGB Series

The AquaStar line of suction outlet covers, compliant with the new Virginia Graeme-Baker Pool and Spa Safety Act (ANSI/APSP 16-2011 And NSF 50-2008)

#### Features

For single or multiple drain use  
(see installation instructions)

Single – 3" sump depth:  
Floor/Wall: 224 GPM at 1.5 fps

48.4 square inch opening

Easily and safely retrofits most brands' existing 9" square 3/4" deep frames\*

Additional sump versions also available

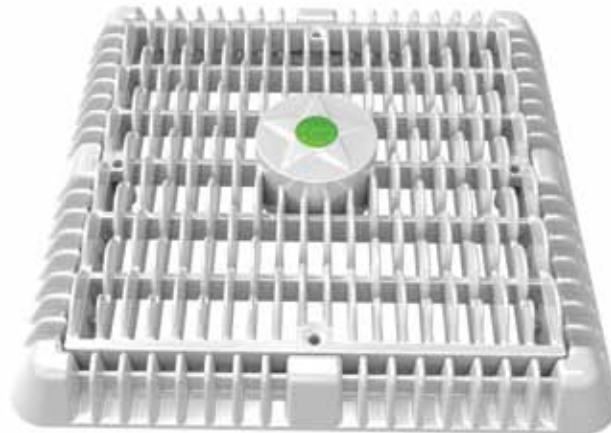
Trademarked VGB compliance button easily identifies VGB 2008 compliant cover from on deck and underwater

#316 stainless steel screws

Manufactured from superior UV-resistant engineered polymers

All components (cover, sump, screws) meet or exceed ANSI/APSP 16-2011 AND NSF 50-2008 national standards and ASTM G154 UV testing exposure

8 per case



\*Fits: AquaStar (p/n 9xxx, pre-VGB "flat"); Pentair (#1 selling) with 3/4" deep existing frames and four screw hole pattern

Part # WAV9WRxxx

9" Square Vented Riser Ring also sold separately part # 9RRxxx

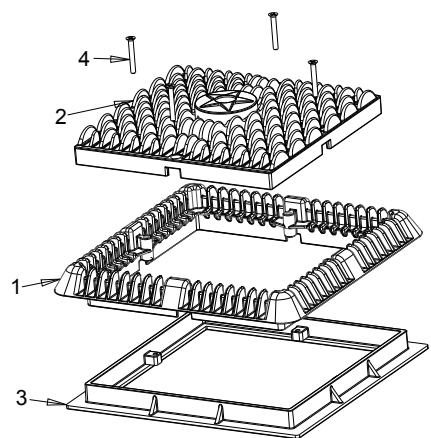
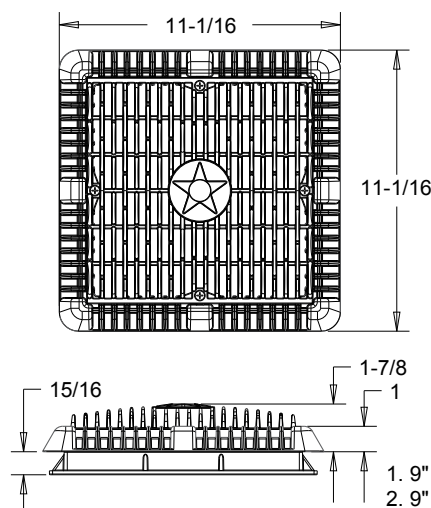
#### STANDARD COLORS

101	105
102	108
103	

#### OPTIONAL COLORS

104	107
106	

VGB 2008 Compliant



1. 9" vented riser ring
2. 9" square "wave" suction outlet cover
3. 9" square drain frame
4. #10 x 1-1/2" flat head phillips type-a screw, 316 ss

## ADDITIONAL PRODUCT CONFIGURATIONS FOR WAV9WRxxx

### Features: Sump Buckets for WAV9WRxxx

For single or multiple drain use (see installation instructions)

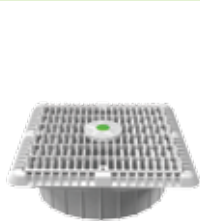
#316 stainless steel screws

Manufactured from superior UV-resistant engineered polymers

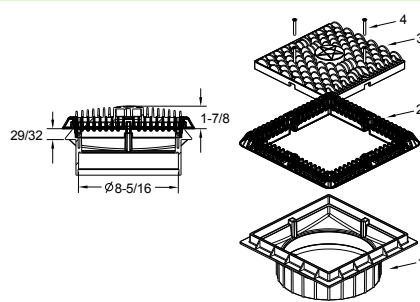
All components (cover, sump, screws) meet or exceed  
ANSI/APSP 16-2011 AND NSF 50-2008 national standards  
and ASTM G154 UV testing exposure

Sold with WAV9WRxxx, not sold separately

#### Double-Deep Sump

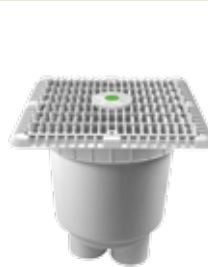


Part #  
WAV9WRxxxA  
4 per case

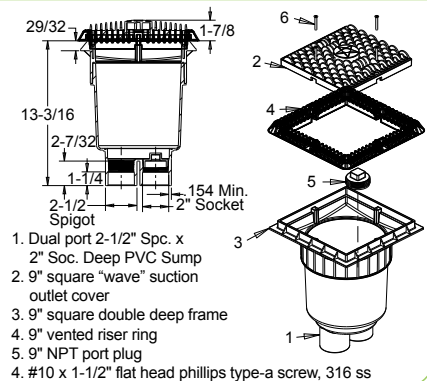


1. 9" square double deep frame
2. 9" vented riser ring
3. 9" square "wave" suction outlet cover
4. #10 x 1-1/2" flat head phillips type-a screw, 316 ss, qty 4

#### Dual-Port 2 1/2" Spigot x 2" Socket Deep PVC Sump



Part #  
WAV9WRxxxB  
2 per case

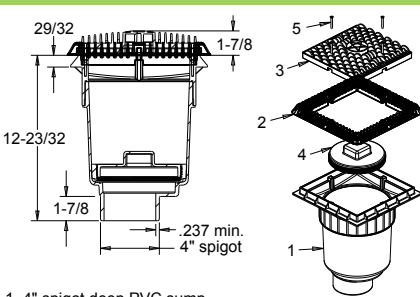


1. Dual port 2-1/2" Spc. x 2" Soc. Deep PVC Sump
2. 9" square "wave" suction outlet cover
3. 9" square double deep frame
4. 9" vented riser ring
5. 9" NPT port plug
6. #10 x 1-1/2" flat head phillips type-a screw, 316 ss

#### 4" Spigot Deep PVC Sump



Part #  
WAV9WRxxxC  
2 per case

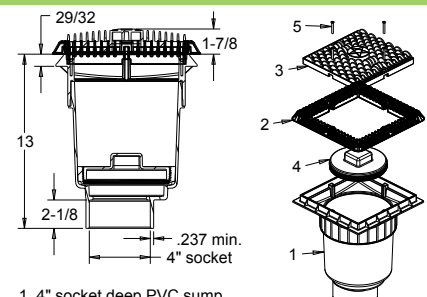


1. 4" spigot deep PVC sump
2. 9" vented riser ring
3. 9" square "Wave" suction outlet cover
4. Plug, 4" NPT, deep sump bucket
5. 10 x 1 1/2" lg flat head phillips screw, 316 ss, qty 4

#### 4" Socket Deep PVC Sump

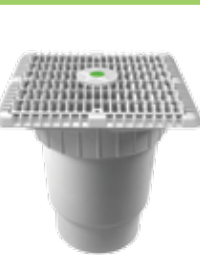


Part #  
WAV9WRxxxD  
2 per case

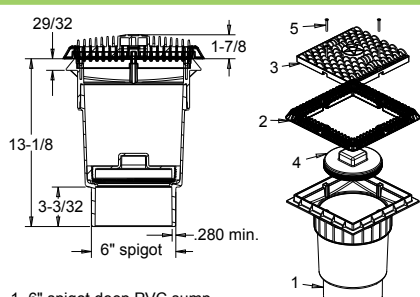


1. 4" socket deep PVC sump
2. 9" vented riser ring
3. 9" square "Wave" suction outlet cover
4. Plug, 4" NPT, deep sump bucket
5. 10 x 1 1/2" lg flat head phillips screw, 316 ss, qty 4

#### 6" Spigot Deep PVC Sump



Part #  
WAV9WRxxxE  
2 per case

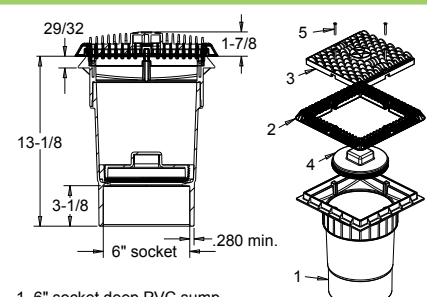


1. 6" spigot deep PVC sump
2. 9" vented riser ring
3. 9" square "Wave" suction outlet cover
4. Plug, 4" NPT, deep sump bucket
5. 10 x 1 1/2" lg flat head phillips screw, 316 ss, qty 4

#### 6" Socket Deep PVC Sump



Part #  
WAV9WRxxxF  
2 per case



1. 6" socket deep PVC sump
2. 9" vented riser ring
3. 9" square "Wave" suction outlet cover
4. Plug, 4" NPT, deep sump bucket
5. 10 x 1 1/2" lg flat head phillips screw, 316 ss, qty 4