

**PARALEVEL**  
AUTOMATIC WATER LEVELER™

FROM THE WORLD'S #1  
IN-FLOOR CLEANING SYSTEMS COMPANY

LET US WORRY ABOUT  
YOUR WATER LEVEL



Powered by:  
**Paramount**  
Pool Life. Simplified.



# PARALEVEL™

AUTOMATIC WATER LEVELER

FROM THE WORLD'S #1  
IN-FLOOR CLEANING SYSTEMS COMPANY

LET US WORRY ABOUT  
YOUR WATER LEVEL

## IT WORKS BEHIND THE SCENES

Paramount's innovative new water leveler, Paralevel, was designed from a pool builders perspective with builders, homeowners and service technicians in mind. No components of this unit were adapted from other industries. Paralevel is continually working behind the scenes to ensure that your pool or spa is at its ideal level. You can rest easy knowing that your pool's water level is being monitored and adjusted automatically. If you ever need to make a manual adjustment Paralevel's "posi-click" adjustment makes it easy. One full turn equals 1/4" (6 mm) of water level adjustment.

Unlike other water levelers Paralevel offers "Smart-Sensing", which means it will ignore water sloshing in the pool as it only senses the pools true level. "Smart-Sensing" also protects Paralevel so it will not cycle on and off rapidly, like other levelers. This limits the potential for premature failure, and eliminates loud water hammer in your home that could lead to damage to your plumbing.

### PARALEVEL FEATURES AND BENEFITS INCLUDE:

- Simple to set, use and winterize
- Easy, accurate "Posi-Click" adjustment
- Smaller footprint in your pool deck
- "Smart-Sensing" not affected by water splashing
- Large balance line
- Overflow line ready
- Quick fill capable
- Service industry friendly
- Paver model available
- Pour-a-lid available

### SMALL SIZE. LARGE BENEFIT.



INNER FLOAT  
ASSEMBLY

#### THREE DECK LID COLORS



WHITE



GRAY

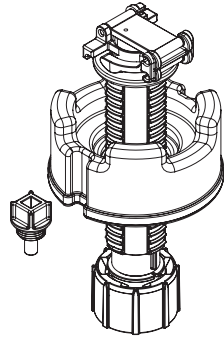


BEIGE

PARALEVEL'S SMALL DESIGN WILL NOT TAKE UP  
VALUABLE POOL SIDE SPACE.

US and Foreign patents and patents pending see [www.1paramount.com/about/patents/](http://www.1paramount.com/about/patents/)





# **PARALEVEL™**

AUTOMATIC WATER LEVELER

## **START UP MANUAL**



004-027-8896-00  
REV 033116



Powered by:  
**Paramount**  
*Pool Life. Simplified.*

295 East Corporate Place • Suite 100 • Chandler, AZ 85225  
Toll Free: 1.800.621.5886 • Phone: 480.893.7607 • Fax: 480.753.3397  
Paramount@1Paramount.com • www.1Paramount.com

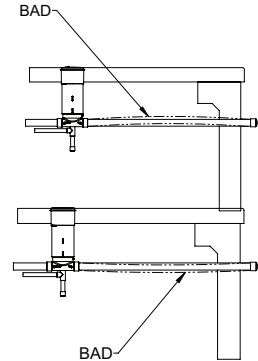
US and Foreign patents and patents pending see [www.1paramount.com/about/patents/](http://www.1paramount.com/about/patents/)

# SYSTEM DESIGN

The Paralevel is designed to control the water level in a swimming pool or spa. The "Posi-Click" control makes adjusting the water level very easy. Four clicks (or one revolution) of the adjustment wheel changes the water level by 1/4". The Paralevel uses "Smart Sensing", eliminating rapid cycling of the device even when the pool is being used. The user can use 1 1/2" or 2" pipe for the balance line. The water line can be plumbed with 1/2" or 3/4" pipe. The Paralevel can also be plumbed with 2" pipe for overflow protection, offering the highest overflow protection in the industry.

## PARALEVEL LAYOUT AND DESIGN CRITERIA

1. Paralevel should be level and plumb.
2. The Paralevel main housing is engraved with "Max High; Max Low; and Pool Level". **The housing should be mounted so that the "Pool Level" line is at the expected water level.**
3. Maximum water pressure is 80 psi.
4. The fill rate at 50 psi is 120 gph (2880 gallons per day).
5. **Warning:** Balance line and overflow line must be plumbed straight. Failure to keep the run of pipe straight may cause an airlock.



## START UP

1. Make sure the water supply line is turned off at the valve.
2. Remove plugs
  - Use the Removal Tool to remove the 1 1/2" NPT Cap.
  - Use a 3/8" socket extension to remove the 1/2" NPT Seal Plug (Fig. 1)
3. Turn on water supply line to flush line for a couple of minutes. Then shut it off.
4. Install the 1 1/2" NPT Nut Retainer. Hand tighten ONLY, even when using tool.
  - Make sure that the Retainer Ring is installed properly in the Retainer Nut. The retaining piece with raised rounded center is inserted facing the top of the retainer nut. (Fig. 2)
  - Use the Removal Tool to install the Nut Retainer
5. Install the 1/2" NPT Flow Plug
  - Use a 3/8" socket extension to install the Flow Plug (Fig. 3)

FIG. 1

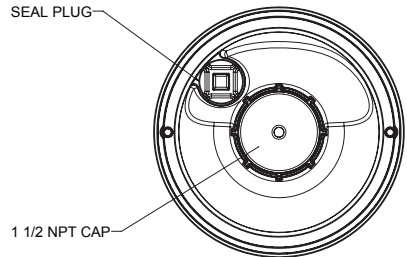


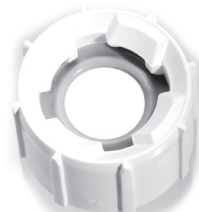
FIG. 2



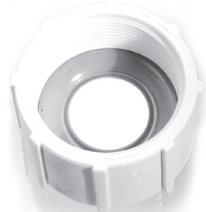
Retaining ring top view with raised rounded center



Retaining ring bottom view with sharper center



Top View: Correct position of retaining ring inside retainer nut with rounded center exposed.



Bottom View: Correct position of retaining ring inside retainer nut with sharper center exposed.

For technical assistance call 1.800.621.5886 or contact your regional representative

6. Installing float assembly

- Grasp the top of the Riser Tube. (Fig. 4)
- Start with float half way on sleeve adjuster (Fig. 5)
- Position the end of the Riser Tube with the o-ring inside the opening at the top of the Nut Retainer. (Fig. 6)
- Turn the riser tube clockwise and wiggle until it drops into the Nut Retainer. Too much downward pressure before it sets into the opening of the Nut Retainer will cause the float assembly to hang up. (Fig. 7)
- Press down on the top of the Riser Tube and twist clockwise 1/4 turn or until it stops. (Fig. 8)

7. Adjustment procedure (standard 3" waterline below beam)

- Turn on water supply at source fully. The Paralevel has anti-water hammer feature as part of its smart sensing. The Paralevel works best at full pressure
- Fill the pool until the water level is just below center of tile with less than 1" left to fill.
- Shut off and remove all auxiliary hoses. Leave the Paralevel water supply on.
- Allow the water level to rise until the Paralevel shuts off.
- Measure the water level from top of beam or bottom of deck. Note the difference from desired water level
- Remove float from housing or reach down on one side pushing on the alternately raised part of the float.
- Turn the float counter-clockwise one revolution for every 1/4" the pool needs to rise and clockwise one revolution for every 1/4" the pool needs to lower .

**Example:** to raise the water level 1", turn the float counter-clockwise four revolutions. (Fig. 9a and 9b)

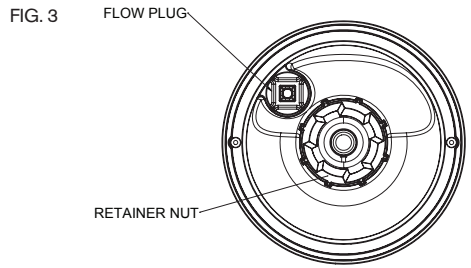


FIG. 4



FIG. 5



FIG. 6

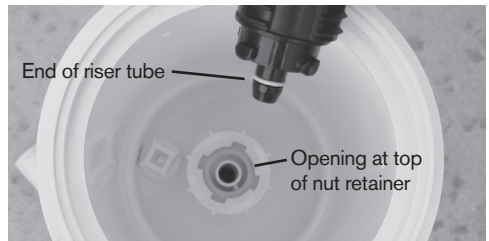


FIG. 7



FIG. 9a

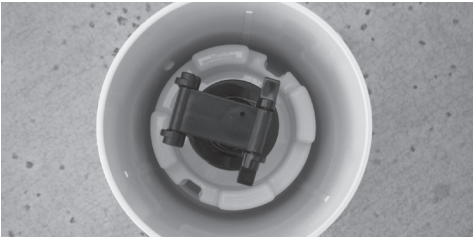


FIG. 9b

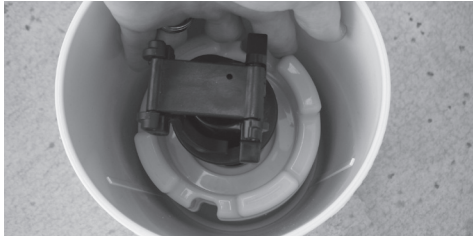


FIG. 8



For technical assistance call 1.800.621.5886 or contact your regional representative

# WINTERIZING INSTRUCTIONS

You will need the items in the winterizing / pressure test kit part number 005-760-2911-00 and tool 004-627-5452-00.

1. Turn off the water to the Paralevel.
2. Remove the Paralevel float assembly by grasping the top of the float assembly (above the adjustment wheel and while pushing down turn the assembly counter clockwise a quarter turn. The float assembly should then pull out. Next using the removal tool #10 on the Paralevel exploded parts diagram (page 6), remove the Retainer Nut and Retainer Ring #19 and #20. Next using a 3/8 inch socket wrench extension remove the Flow Plug and O-ring #17 and #18 on the Paralevel exploded parts diagram. (page 6)
3. Drain the water in the pool to below the opening for the equalizer line for the Paralevel. Place the O-ring and Seal Plug #4 and #5 on the winterizing kit exploded parts diagram (page 7) into the threaded hole that the Flow Plug was removed from.

**Note: If draining the pool down below the equalizer line is not practical, then blow out the equalizer line at the pool side by using a test plug with a Schrader valve and an air compressor, at the same time suck out the water from the water leveler canister.**

4. Disconnect the water supply line at the house going to the Paralevel. Blow this line to the opening where the Retainer Nut and O-ring were while using a wet/dry shop-vac placed directly over the threaded opening where the Retainer Nut was removed from to collect the water blown into the Paralevel housing. When the line is clear place the Cap Seal and Main seal #1 and #3 on the winterizing kit exploded parts diagram (page 7) over this opening. It is recommend that the disconnected water line at the house be taped shut or sealed when disconnected so insects and debris don't get in the line.
5. Keep all of the plugs gaskets and o-ring removed for winterizing for startup in the spring. **Note:** the float assembly will not need to be adjusted next spring as long as you do not turn the adjustment wheel from its set position when removed.

**6. Optional: pour some non-toxic anti-freeze in the water leveler canister.**

## IDENTIFYING PARALEVEL MODEL

1. Turn off the water.
2. Grasp top of float assembly, twist counter clockwise 1/4 turn, and pull out.

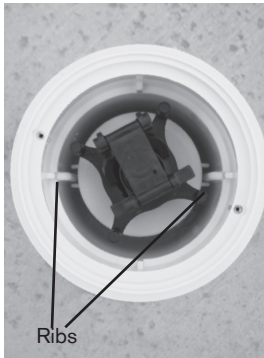
Old Float FIG. 10a



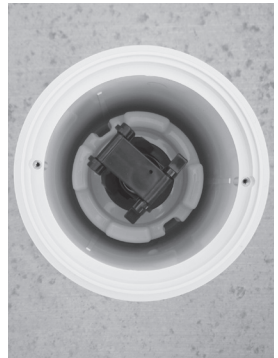
New Float FIG. 10b



Old Tank FIG. 11a



New Tank FIG. 11b



For technical assistance call 1.800.621.5886 or contact your regional representative

## USING NEW FLOAT IN OLD TANK

1. While holding the new float, twist sleeve counter clockwise until it comes out of the float.
2. Turn float over and re-thread on sleeve with flat side up. Be careful not to cross-thread. (Fig. 12)
3. Compare the float height on the sleeve to the old float. The new style float will need to be approximately 5/8" lower on the sleeve to achieve a similar water level. (Fig. 13)
4. Install in the housing and turn on the water supply.
5. If the float is off, shut off the water and remove the float and turn in the direction indicated on the flat side of the float to raise the water level 1/8", one half turn, or 2 posi-clicks. Follow the arrows on the float. (Fig. 14)
6. If the float is on, shut off the water and remove the float and turn in the direction indicated on the flat side of the float to raise the water level 1/8", one half turn, or two (2) posi-clicks. Follow the arrows on the float. (Fig. 14)
7. Repeat steps 5a or 5b until water level is matched.
8. Check pool level after a few days to verify correct set level.

FIG. 12

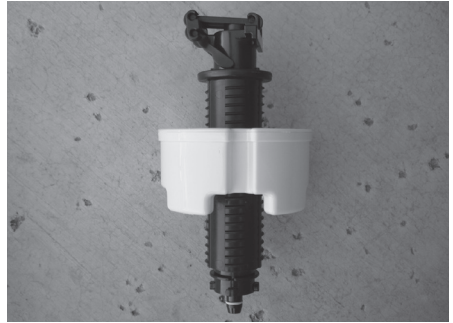


FIG. 13

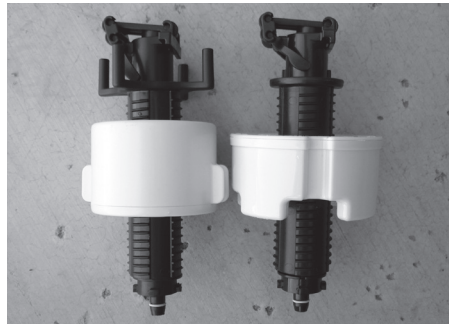
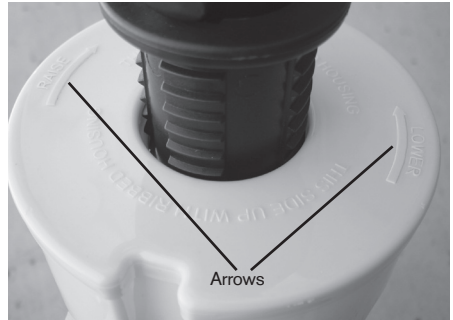
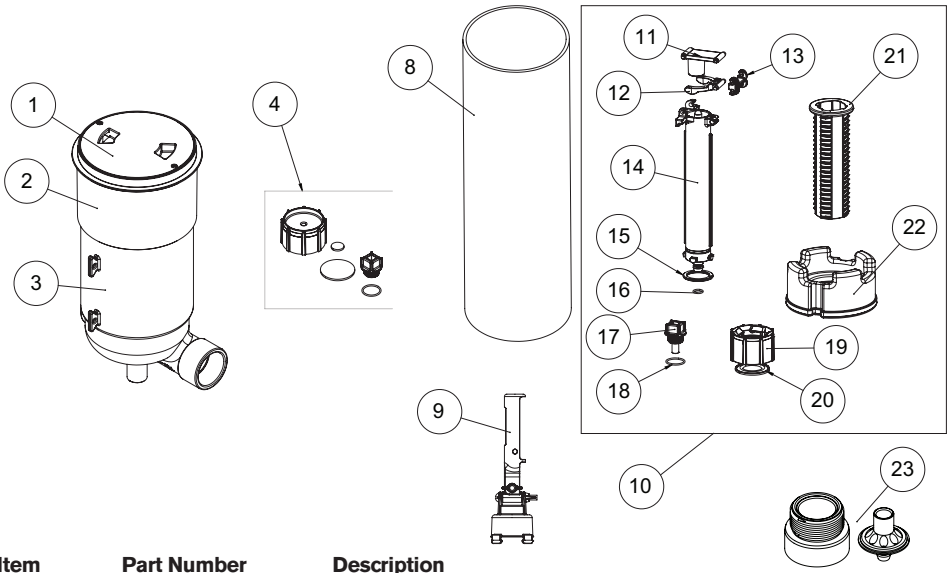


FIG. 14



# 004-760-2902-XX PARALEVEL B

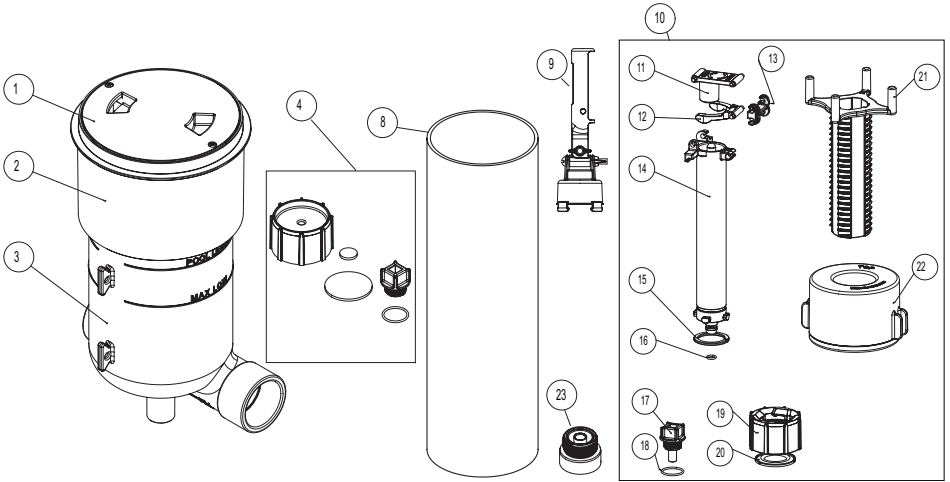


Item	Part Number	Description
1	005-760-2901-XX	LID
2	005-760-2915-XX	DECK RING
3		HOUSING
4	005-760-2911-00	WINTERIZATION/PRESSURE TEST KIT
*		1 1/2 NPT CAP
*		MAIN SEAL
*		CAP SEAL
*		SEAL PLUG
*		O-RING 2-020 EP70
8	005-252-1541-00**	EXTENSION KIT
9	004-627-5452-00**	TOOL
10	004-760-2921-00	START UP KIT B
11	*	TOP LEVER
12	*	LOWER LEVER
13	*	LINK LEVER
14	*	RISER TUBE
15	*	SNAP RING
16	*	O RING 2-011 VITON DUR 75
17*		FLOW PLUG
18	*	O RING 2-020 EP70
19	*	RETAINER NUT
20	*	RETAINER RING
21	*	ADJUSTER SLEEVE
22	*	FLOAT BODY
23	005-761-2934-00	EXTENSION 1"

\* Parts are not available separately \*\* not part of Paralevel order separately

For technical assistance call 1.800.621.5886 or contact your regional representative

# 004-760-2900-XX PARALEVEL A

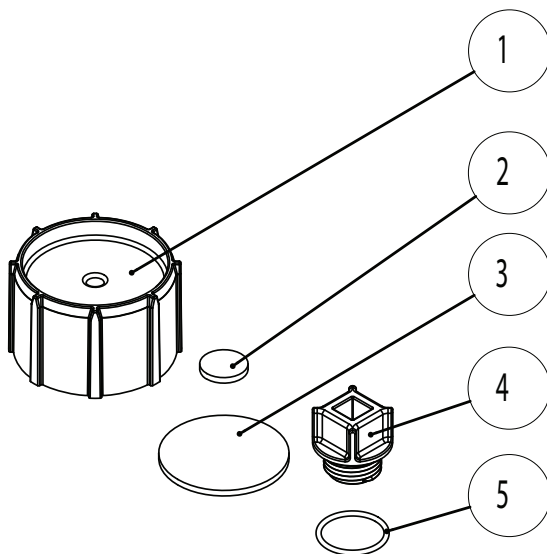


Item	Part Number	Description
1	005-760-2901-XX	LID
2		DECK RING
3		HOUSING
4	005-760-2911-00	WINTERIZATION/PRESSURE TEST KIT
*		1 1/2 NPT CAP
*		MAIN SEAL
*		CAP SEAL
*		SEAL PLUG
*		O-RING 2-020 EP70
8		EXTENSION KIT
9	004-627-5452-00**	TOOL
10	004-760-2921-00	START UP KIT
11	*	TOP LEVER
12	*	LOWER LEVER
13	*	LINK LEVER
14	*	RISER TUBE
15	*	SNAP RING
16	*	O RING 2-011 VITON DUR 75
17*		FLOW PLUG
18	*	O RING 2-020 EP70
19	*	RETAINER NUT
20	*	RETAINER RING
21	*	ADJUSTER SLEEVE
22	*	FLOAT BODY
23	005-761-2934-00	EXTENSION 1"

\* Parts are not available separately \*\* not part of Paralevel order separately

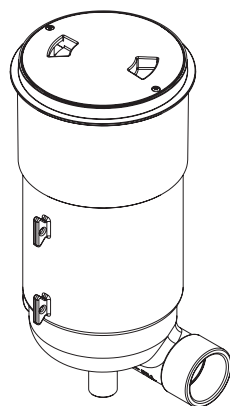
For technical assistance call 1.800.621.5886 or contact your regional representative

# 005-760-2911-00 PARALEVEL WINTERIZING/ PRESSURE TEST KIT



Item	Part Number	Description
	*005-760-2911-00	WINTERIZATION/PRESSURE TEST KIT
1		1/2 NPT CAP
2		MAIN SEAL
3		CAP SEAL
4		SEAL PLUG
5		O RING 2-020 EP70

\*Sold Separately



# **PARALEVEL**<sup>TM</sup>

A U T O M A T I C   W A T E R   L E V E L E R

## PLUMBING MANUAL



004-027-8897-00  
REV033116  
US Patent Pending



Powered by:  
**Paramount**  
*Pool Life. Simplified.*

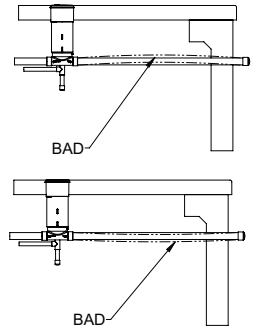
295 East Corporate Place • Suite 100 • Chandler, AZ 85225  
Toll Free: 1.800.621.5886 • Phone: 480.893.7607 • Fax: 480.753.3397  
Paramount@1Paramount.com • www.1Paramount.com

# SYSTEM DESIGN

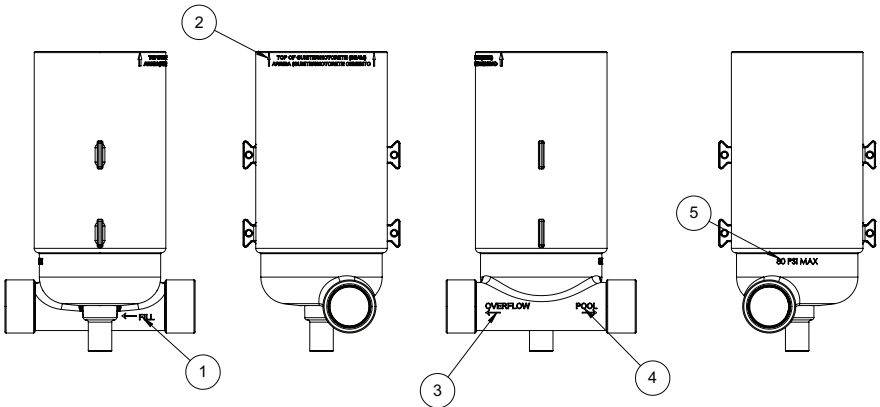
The Paralevel is designed to control the water level in a swimming pool or spa. The "Posi-Click" control makes adjusting the water level very easy. Four clicks (or one revolution) of the adjustment wheel changes the water level by  $\frac{1}{4}$ ". The Paralevel uses "Smart Sensing", eliminating rapid cycling of the device even when the pool is being used. The user can use 1  $\frac{1}{2}$ " or 2" pipe for the balance line. The water line can be plumbed with  $\frac{1}{2}$ " or  $\frac{3}{4}$ " pipe. The Paralevel can also be plumbed with 2" pipe for overflow protection, offering the highest overflow protection in the industry.

## PARALEVEL LAYOUT & DESIGN CRITERIA

1. Paralevel should be level and plumb.
2. The Paralevel main housing is engraved with "Max High; Max Low; and Pool Level". The housing should be mounted so that the "Pool Level" line is at the expected water level.
3. Maximum water pressure is 80 psi.
4. The fill rate at 50 psi is 120 gph (2880 gallons per day).
5. **WARNING:** Balance line and overflow line must be plumbed straight. Failure to keep the run of pipe straight may cause an airlock.



## OVERVIEW



1. Fill port. Attach  $\frac{1}{2}$ " in the ID or  $\frac{3}{4}$ " on the O.D. using a  $\frac{3}{4}$ " SxS fitting fill line from the water supply. Be sure to install a shut off valve and approved vacuum breaker per local codes between the water supply and the Paralevel.
2. Top of Gunite/shotcrete (Beam). This is the top of the pool shell assuming 3" above final water level.
3. Overflow. 2" PVC pipe should be used for overflow. A 2" line will make air locks less likely. This must be capped off if it isn't used.
4. Pool. This is the balance line into the pool. The fill water flows into the pool from this line. This may be plumbed with 1  $\frac{1}{2}$ " or 2" PVC pipe
5. 80 psi Max. This is the maximum water pressure to be used with the Paralevel.

**NOTE:** MAKE ALL PLUMBING CONNECTIONS WITH PVC PIPE AND PVC PRIMER AND GLUE.

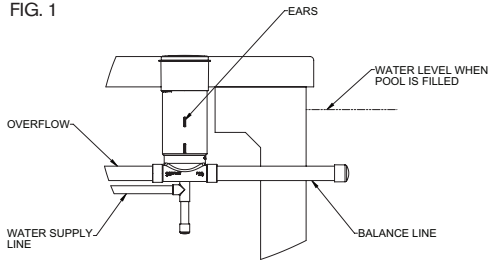
For technical assistance call 1.800.621.5886 or contact your regional representative

# INSTALLATION METHODS

## Straight into pool

- A. Paralevel should be installed plumb and level with the top of the housing set even with the top of pool beam (standard 3" water clearance).
- B. Use the "ears" on the sides of the main housing to securely tie to form boards or stakes. (Fig. 1)
- C. During construction the Paralevel housing must be covered with plastic and/or tape to prevent debris from falling inside.

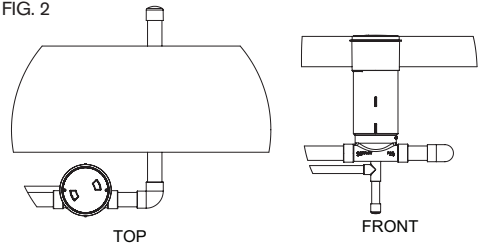
FIG. 1



## 90° to pool (Fig. 2)

Top View from above Front View from outside of pool

FIG. 2



## Distance from Pool

- A. The Paralevel can be placed adjacent to the side of the pool (Fig. 3), in the deck or at the equipment pad (Fig 4) as long as straight and level pipe runs can be maintained.
- B. There cannot be any place where the pipe rises and falls possibly creating an air lock. See Paralevel layout and design criteria.

**CAUTION:** It is recommended that a separate shut off valve and approved vacuum breaker, per local codes, be plumbed in between the supply water source and the Paralevel housing.

Recommended "T" arrangement at fill port as a debris trap. (Fig. 5)

**Not to be used when winterization is required. Cannot be used in conjunction with winterization**

FIG. 3

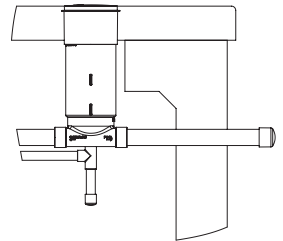


FIG. 4

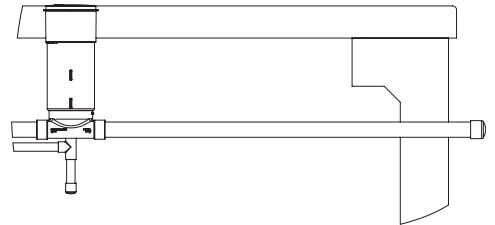
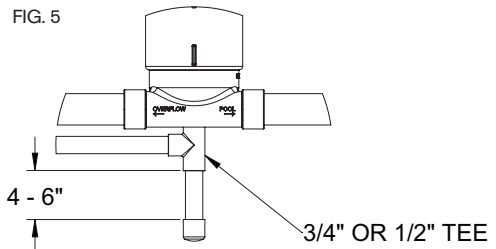


FIG. 5



# WATERLINE PRESSURE TEST

## 6. Water line pressure test only.

- Install pressure test cap with large AND small seals. (Fig. 7a and 7b)
- Tighten cap using removal tool (Fig 7c)

FIG. 7a

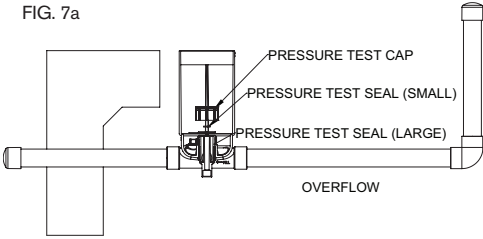


FIG. 7b

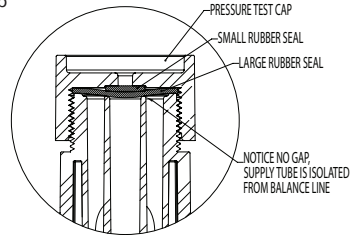
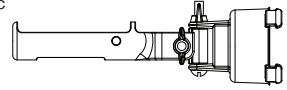


FIG. 7c



# OVERFLOW & BALANCE LINE PRESSURE TESTING

## 7. Balance line and overflow pressure test

- Install pressure cap with large seal only
- Tighten cap using removal tool (Fig. 8a and 8b)
- Install small pressure cap with O-ring using a 3/8" socket extension (not included).

FIG. 8a

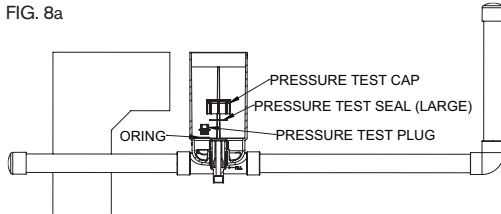
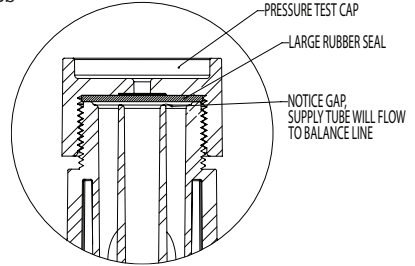


FIG. 8b

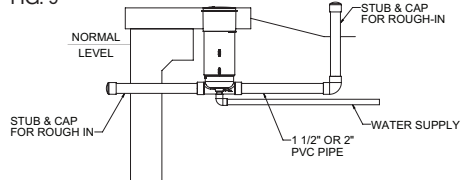


# OVERFLOW INSTALLATION INSTRUCTIONS

## 8. Basic Overflow/Balance line rough-in. (Fig. 9)

- 1 1/2" or 2" PVC schedule 40 pipe should be used
- Overflow can be set as close to or as far away from pool as necessary as long as straight and level lines can be maintained.
- Pool water from overflow must be disposed of in accordance with state and local codes.
- Can be plumbed into a drain sump
- Can be plumbed into a deck drainage system
- Must be capped off if not used.

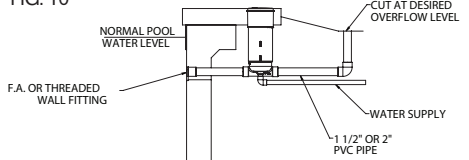
FIG. 9



## 9. Overflow Installation Method 1. (Fig. 10)

- Simplest installation method.
- Cut pipe at desired overflow level.
- This method shouldn't be used in areas where pool is winterized.

FIG. 10



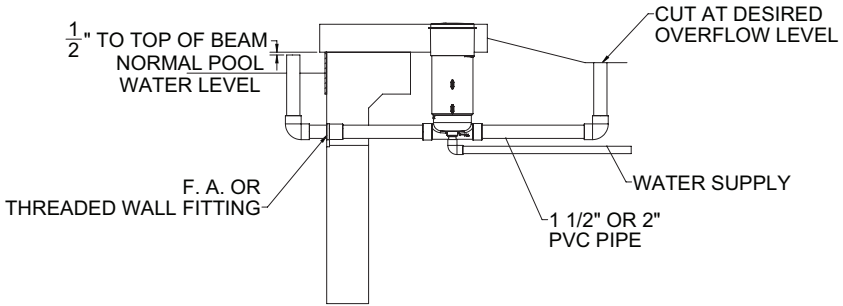
For technical assistance call 1.800.621.5886 or contact your regional representative

## PARALEVEL OVERFLOW SET LEVEL

### Steps to Ensure Overflow is Set at Proper Level

These instructions work with the deck installed or not. If deck is installed the overflow connection must be made outside the deck.

1. Cut off the balance line rough plumbing stub inside the pool.
2. Install a female adapter or threaded wall fitting for final finish. Alternately if a FA is not used or this step is performed in advance of final finish prep; the balance line can be cut long. Skip to step 4.
3. Thread a pipe nipple into the fitting.
4. Attach a 90 degree elbow and a standpipe to the threaded fitting.
5. Measure and cut the standpipe to the desired overflow level (example 1 1/2" below the top of beam a 1 1/2" pipe will fit below the deck. This will allow the pool to overflow approximately 1 1/2" before spilling out the overflow pipe. If using 2" pipe drop to 2" below beam which will allow the pool to over fill 1" before spilling.)
6. Cut the standpipe on the exterior of the pool within a few inches above the desired spill level.
7. Fill the pipe with water and allow it to settle level to the temporary standpipe inside the pool.
8. Cut the exterior stub to match the level of the water in the pipe.
9. Remove the temporary standpipe on the interior of the pool by turning the threaded pipe out of the fitting.
10. Install one of the connections to waste shown in method 1 thru 4 on page 3 in the installation manual.



SETTING OVERFLOW

## WATER LEVEL PRESET PROCEDURES

**This method can also be used to preset the float leveler if the pool is not full of water**

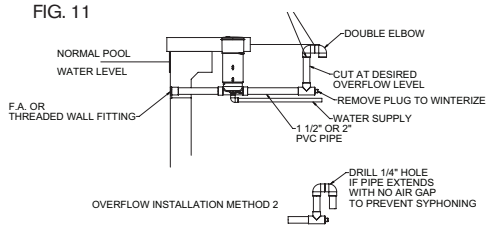
1. Turn on the water supply and flush the feed line to the Paralevel.
2. After the overflow is set cut the standpipe on the interior of the pool even with the desired water level in the finished pool.
3. Install the Paralevel float assembly per the instructions in the manual.
4. Turn on water supply.
5. Set the water level to shut off when the canister fills to the top of the standpipe.
6. Turn off the water supply.
7. When the pool is complete fill with water to almost full, remove the hose and allow the Paralevel to complete the fill to the preset mark. This will eliminate the need to watch the pool closely so it won't overflow on initial fill and can help ensure the pool will be full when startup is scheduled.

# OVERFLOW INSTALLATION INSTRUCTIONS

Recommended for areas where pool is winterized.

## Overflow Installation Method 2. (Fig. 11)

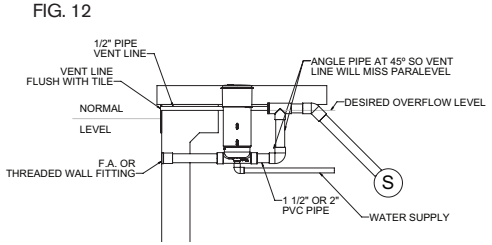
- Cut pipe at desired overflow level.
- Add double 90° ells to guide overflow into a drain sump.
- Do not glue ells to allow for future overflow adjustment.
- There must be an air gap between end of overflow pipe and drain sump to prevent siphoning.
- Drill 1/4" hole in top or side of pipe as shown if pipe extends into drain sump without an air gap.



**WARNING: IF PIPE EXTENDS INTO DRAIN WITH NO VENTING, SIPHONING WILL OCCUR.**

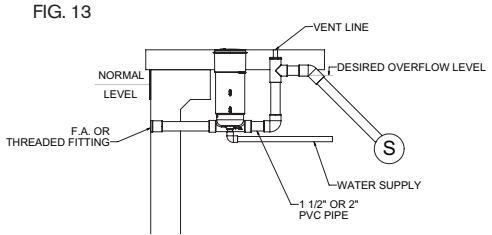
## Overflow Installation Method 3. (Fig. 12)

- Vent line is flush with tile.
- Cut pipe at desired overflow level.
- Can be installed under the deck.



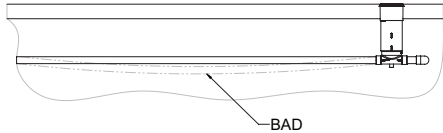
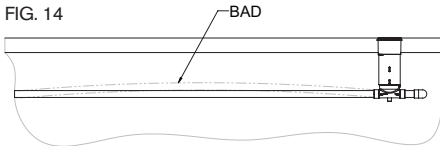
## Overflow Installation Method 4. (Fig. 13)

- Vent line goes up through deck.
- Cut pipe at desired overflow level.
- Can be installed under the deck.



**WARNING!** Pipe must be straight

- There cannot be any place where the pipe rises and falls possibly creating an air lock. (Fig. 14)



# DECK INSTALLATIONS

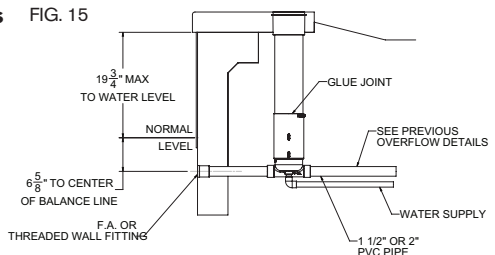
**WARNING!** Before pouring deck make sure the Paralevel main housing has not shifted during construction

- Minimum deck thickness is 2 1/8". Deck thickness over 5" may require an extension kit

# NEGATIVE EDGE, BASIN OR RAISED DECK INSTALLATION

## Negative edge, basin or raised deck installations with extension kit. (Fig. 15)

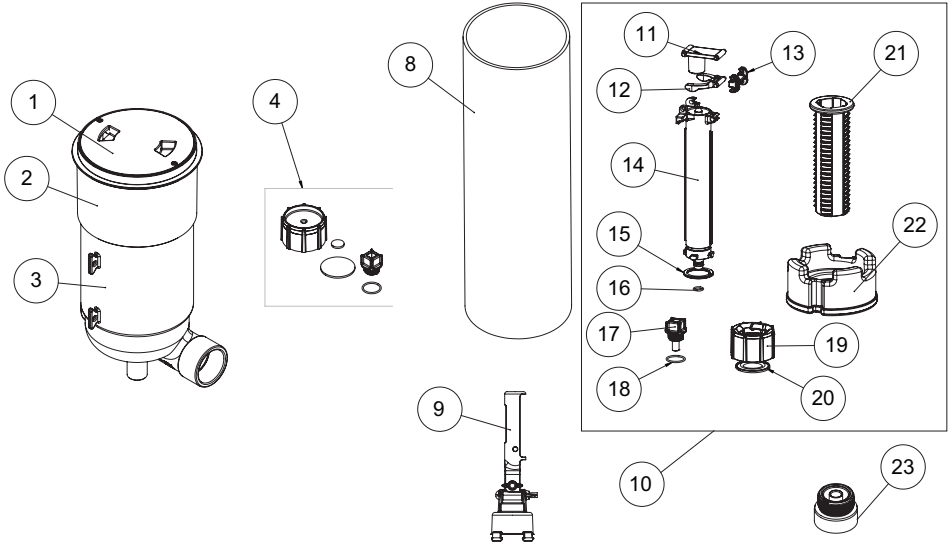
- If required an extension kit (005-252-1541-00) can be purchased separately.
- The extension should be glued in place using PVC primer and gray PVC glue
- Use 6 5/8" from normal water level to the center of the balance line.
- A maximum of 19 3/4" is allowed from the top of beam to the normal water level.



For technical assistance call 1.800.621.5886 or contact your regional representative

# PARALEVEL B PART NUMBERS

004-760-2903-XX



Item	Part Number	Description
1	005-760-2901-XX	LID
2	005-760-2915-XX	DECK RING
3		HOUSING
4	005-760-2911-00	WINTERIZATION/PRESSURE TEST KIT
*		1 1/2 NPT CAP
*		MAIN SEAL
*		CAP SEAL
*		SEAL PLUG
*		O-RING 2-020 EP70
8	005-252-1541-00**	EXTENSION KIT
9	004-627-5452-00**	TOOL
10	004-760-2929-00	START UP KIT B
11	*	TOP LEVER
12	*	LOWER LEVER
13	*	LINK LEVER
14	*	RISER TUBE
15	*	SNAP RING
16	*	O RING 2-011 VITON DUR 75
17	*	FLOW PLUG
18	*	O RING 2-020 EP70
19	*	RETAINER NUT
20	*	RETAINER RING
21	*	ADJUSTER SLEEVE
22	*	FLOAT BODY
23	004-762-2930-00**	EXTENSION 1"

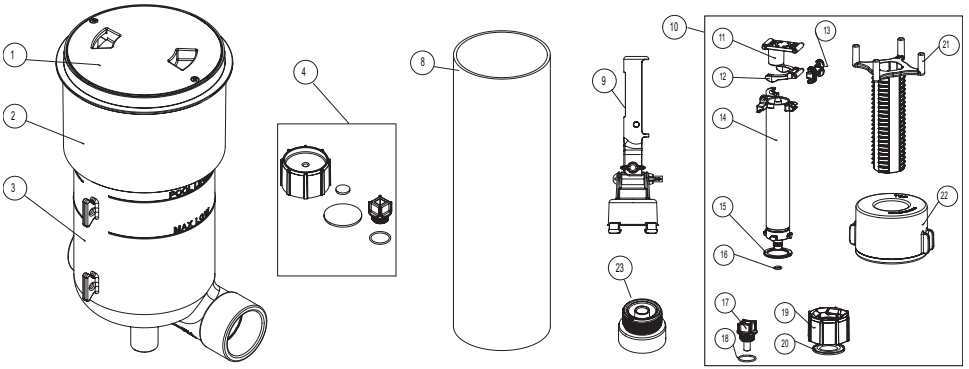
\* Parts are not available separately

\*\* not part of Paralevel order separately

For technical assistance call 1.800.621.5886 or contact your regional representative

# PARALEVEL A PART NUMBERS

004-760-2900-XX

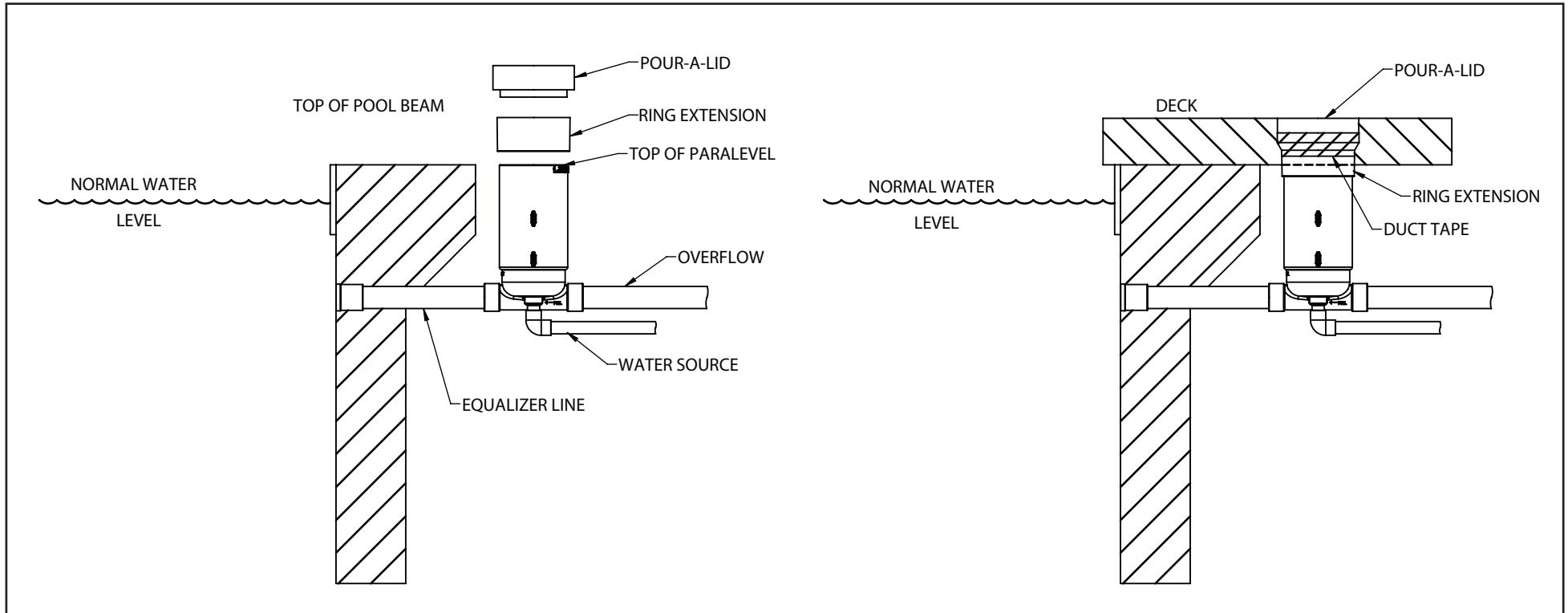


Item	Part Number	Description
1	005-760-2901-XX	LID
2		DECK RING
3		HOUSING
4	005-760-2911-00	WINTERIZATION/PRESSURE TEST KIT
*		1 1/2 NPT CAP
*		MAIN SEAL
*		CAP SEAL
*		SEAL PLUG
*		O-RING 2-020 EP70
8	005-252-1541-00**	EXTENSION KIT
9	004-627-5452-00**	TOOL
10	004-760-2919-00	START UP KIT
11	*	TOP LEVER
12	*	LOWER LEVER
13	*	LINK LEVER
14	*	RISER TUBE
15	*	SNAP RING
16	*	O RING 2-011 VITON DUR 75
17	*	FLOW PLUG
18	*	O RING 2-020 EP70
19	*	RETAINER NUT
20	*	RETAINER RING
21	*	ADJUSTER SLEEVE
22	*	FLOAT BODY
23	004-762-2930-00**	EXTENSION 1"

\* Parts are not available separately

\*\* not part of Paralevel order separately

For technical assistance call 1.800.621.5886 or contact your regional representative



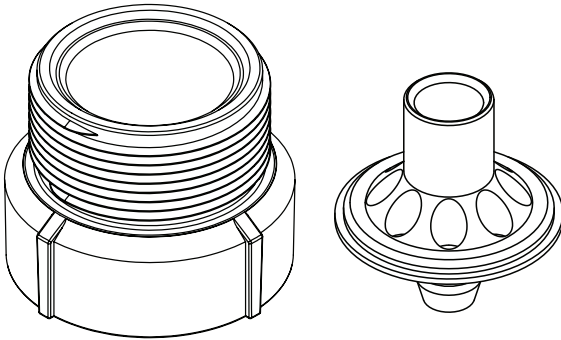
The Paramount Paralevel Pour-A-Lid will accept decks with a thickness of 2 and 3/4 inches up to 4 and 1/2 inches.

- Step 1.** The Pour-A-Lid comes with a ring extension. This extension fits on the outside of the Pour-A-Lid's deck ring bottom flange, and slips over the outside of the Paralevel. Place the Pour-A-Lid's Paramount extension together. Using Duct Tape secure the extension ring on the outside of the Paralevel so the Pour-A-Lid ring top is even with the top of what will be the finished deck height. Pour some concrete around the deck ring and extension first so it will be secure when pouring the rest of the deck.
- Step 2.** Pour the concrete deck and fill the inside of the Pour-A-Lid with concrete, leaving room for the deck finish material if other than a salt or natural finish is going to be used.
- Step 3.** Finish the top of the deck and the concrete in the Pour-A-Lid with the topping of your choice.

# PARALEVEL®

AUTOMATIC WATER LEVELER

## INSTALLING PARALEVEL EXTENSION



004-027-7807-00 REV040714

US and Foreign patents and patents pending see [www.1paramount.com/about/patents/](http://www.1paramount.com/about/patents/)

295 East Corporate Place • Suite 100 • Chandler, AZ 85225

Toll Free: 1.800.621.5886 • Phone: 480.893.7607

Fax: 480.753.3397

Paramount@1Paramount.com • [www.1Paramount.com](http://www.1Paramount.com)

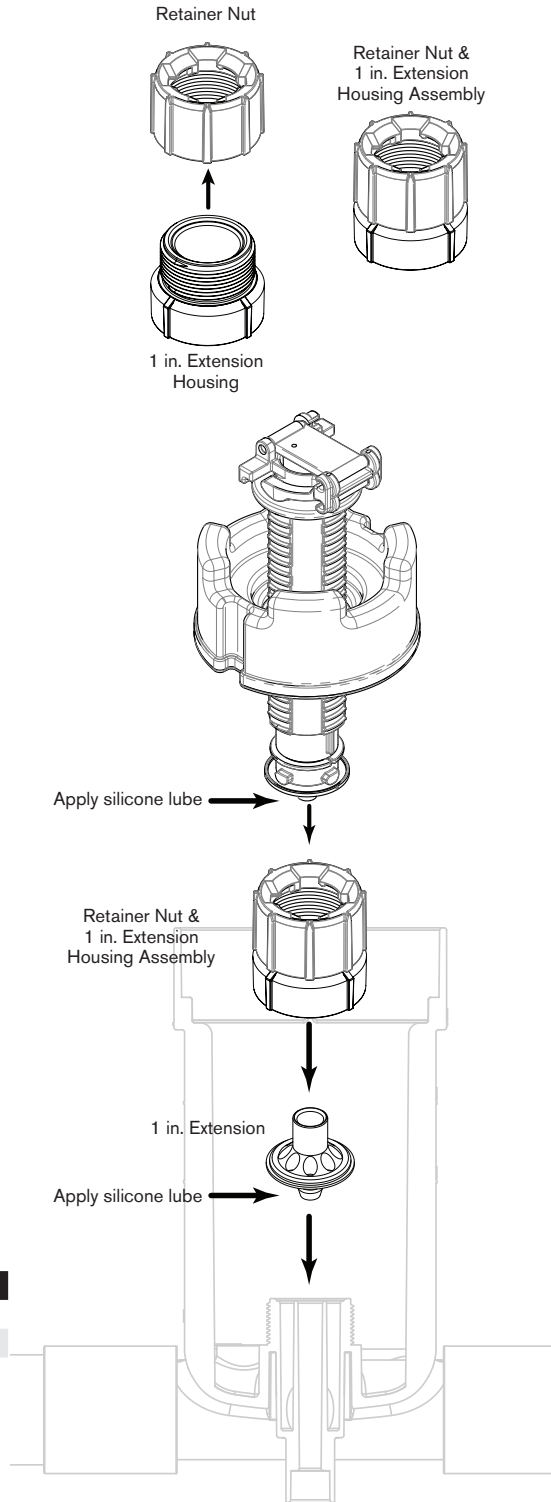


**Paramount**

Pool Life. Simplified.

**NOTE THIS EXTENSION RAISES THE FLOAT ASSEMBLY AND YOU MUST HAVE ENOUGH CLEARANCE UNDER THE DECK LID FOR IT TO CLEAR THE NEW FLOAT ASSEMBLY HEIGHT.**

1. Turn off the water to the Paralevel. Remove the float assembly by pushing down on the top and turning it counter clockwise. Remove the plastic retainer nut in the bottom of the Paralevel housing (The optional PV-3 nozzle removal tool can be used to remove and reinstall this nut).
2. Screw the retainer nut to the 1 inch extension housing and hand tighten.
3. Apply a small amount of silicone lube on the yellow O-ring on the 1 inch extension and insert this piece into the Paralevel housing with the O-ring side down.
4. Screw the retainer nut and 1 inch extension housing assembly tightly back into the bottom of the Paralevel. If more than 1 inch of rise is needed, a second extension can be used between the retainer nut and the first extension and extension housing.
5. Place a small amount of silicon lube on the Paralevel float assembly yellow O-ring and carefully insert it into the unit, moving it around a little, until you feel the end drop slightly into the center of the retainer nut. Push down and turn clockwise to lock in place. Adjust the float as needed.



Paramount Part#	Description
005-761-2934-00	Paralevel Float 1 in. Extension
005-761-2935-00	Paralevel Float 2 in. Extension
004-627-5452-00	PV3 Nozzle Removal Tool